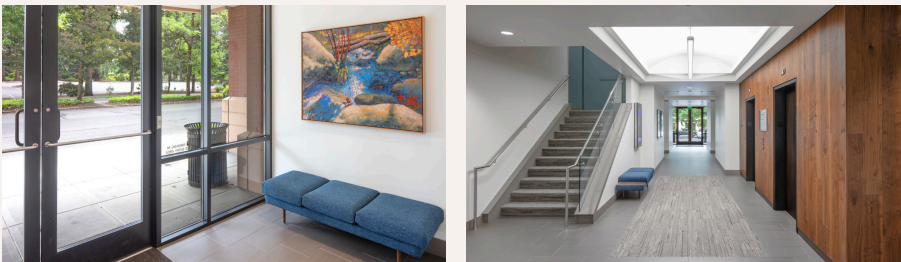


OFFICE FOR SUBLEASE

Pacific Parkway Center

12909 SW 68th Pkwy, Suite 170, Portland, OR 97223



Key Features



1,914 sq. ft. office

Building conference room

Upgraded, modern finishes

Outdoor seating area

Immediate access to Interstates 5 and 217

4/1,000 parking ratio

Nearby amenities and services

Master lease through 3/31/2026 (longer term available)

Lease Rate:

\$36.00/sq. ft./yr.
full service

Jake Bigby

jakeb@pacitrust.com

Caitlin Knecht

caitlink@pacitrust.com

503.624.6300

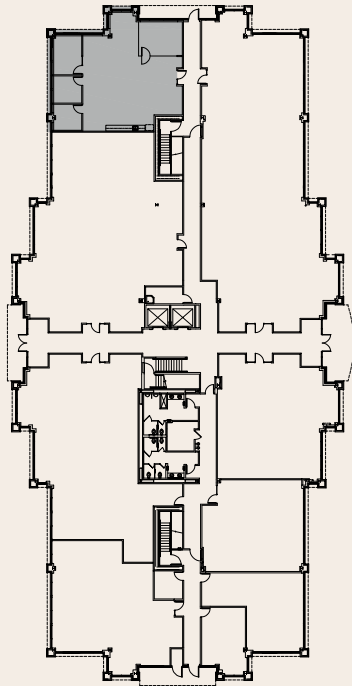
Owned & Managed by

PACITRUST

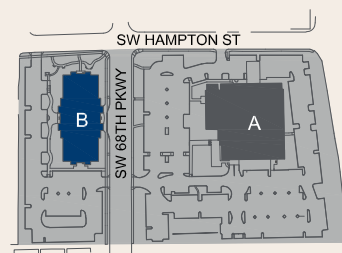
Space Plan

12909 SW 68th Pkwy, Suite 170, Portland, OR 97223

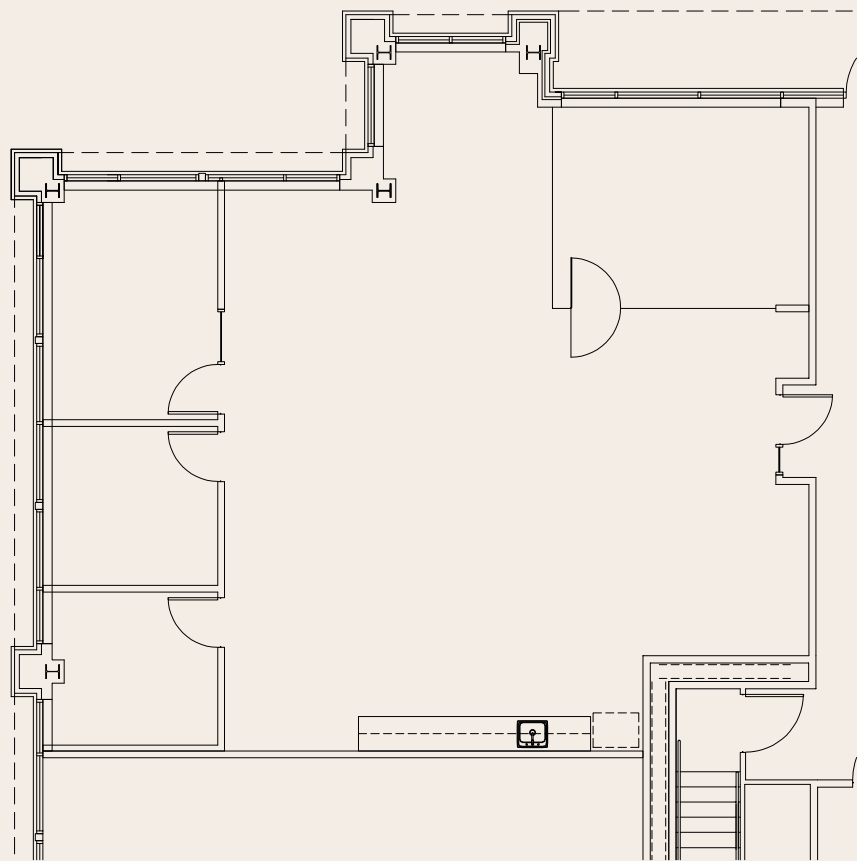
1,914 Sq. Ft.



**FIRST FLOOR
BUILDING PLAN**



PACIFIC PARKWAY CENTER
Portland, OR 97223



Jake Bigby
jakeb@pactrust.com

Caitlin Knecht
caitlink@pactrust.com

503.624.6300
www.PacTrust.com